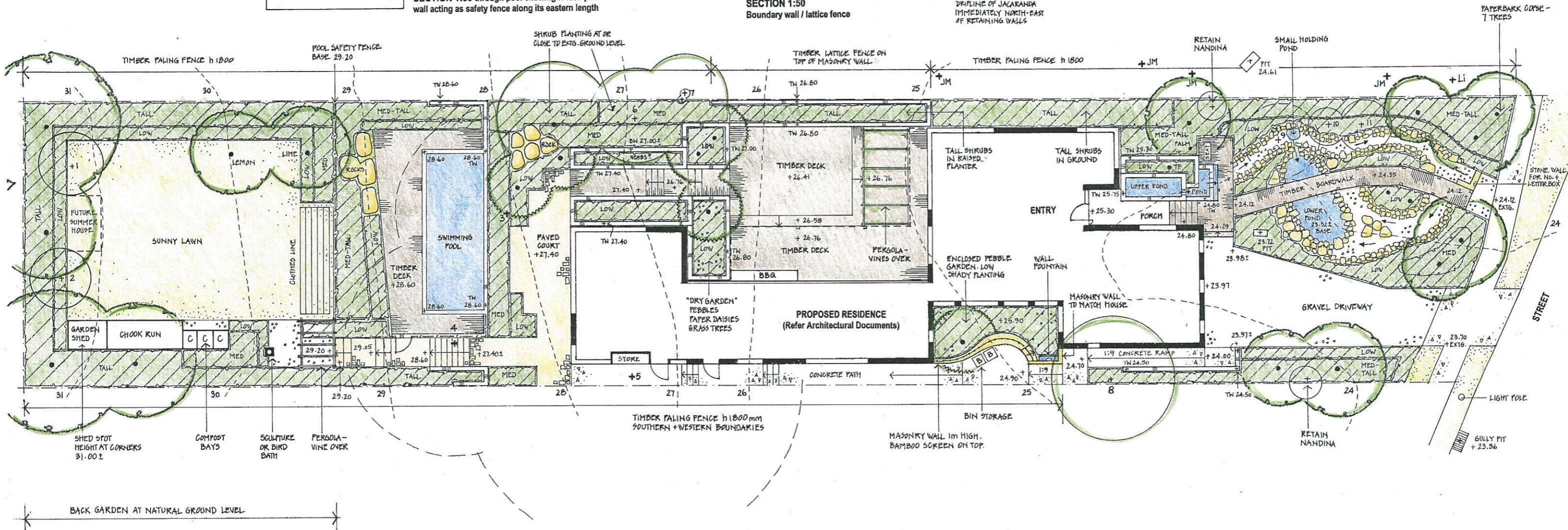


**'WETLAND GARDEN'**

Water from upper pond flows to middle pond, spills behind and under timber deck, and flows via plastic-lined pebble-based 'creek' to small holding pond from which it overflows to lower pond and is pumped back to upper pond in a continuous cycle. In rainy periods the dry 'creek bed' is intended to channel some overland flow to lower pond, from which excess water will be piped to stormwater. (Refer Hydraulic Engineers documents).

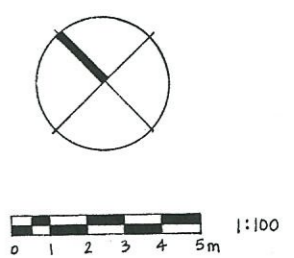


**SCHEDULE OF EXISTING TREES**

KEY	SPECIES	SIZE	ACTION
1	Elaeocarpus reticulatus ?	Semi-mature	Retain
2	Leptospermum sp	Mature	Retain
3	Grevillea robusta	Mature	Remove
4	Pinus sp	Mature	Remove
5	Cinnamomum camphora	Mature	Remove
6	Acer palmatum	Semi-mature	Retain
7	Lagerstroemia indica	Semi-mature	Retain
8	Metrosideros excelsa	Mature	Retain if possible
9	Prunus sp	Semi-mature	Remove
10	Callistemon sp	Semi-mature	Retain
11	Viburnum sp	Mature large shrub	Retain

**LEGEND**

- Site boundary
- - - Existing contours (1m interval)
- +28.60 Proposed spot heights
- / - Pool safety fence h 1200mm
- (+) Existing trees to be retained (Refer Schedule of Existing Trees)
- (x) Existing trees to be removed (Refer Schedule of Existing Trees)
- +JM, Li Existing Jacarandas and Crepe Myrtle on neighbouring property
- (circle with dot) Proposed trees
- (circle with cross) Proposed palms
- (rectangle with diagonal lines) Proposed planting (indicative heights as shown)  
Low = < 700mm  
Medium = 700mm - 2m  
Tall = > 2m
- (For indicative plant species (>90% native) refer attachment to Cover Letter)
- (dotted pattern) Grass
- (stippled pattern) Fine pebble mulch
- (stone pattern) Dry stone edging to 'creek' and lower pond
- (square pattern) Stone paving
- (grid pattern) Concrete paving
- (brick pattern) Masonry walls
- (horizontal lines) Timber decking
- (vertical lines) Timber decking showing support posts located to avoid u/g services (For location of services and easements refer attachment to Cover Letter)
- (arrow) Water flow
- (dashed arrow) Water flow under timber deck



PROJECT	
DRAWING	LANDSCAPE CONCEPT PLAN FOR DEVELOPMENT APPLICATION
CLIENT	
LANDSCAPE ARCHITECT	Helen Latham
DATE	27 November 2002